

400-60-1

When Ordering Please Specify:

1. Part Number of Keeper.
 2. Part Number of Lock, If Desired.*
 3. Part Number of Inside Handle, If Desired.*
 4. Part Number of Outside Pull, If Desired.*
 5. Stile Thickness if Ordering Handle & Pull.
- *See Lock, Handle, and Pull Sheets.

KEEPERS

Designed to meet a variety of design requirements while providing excellent resistance to forced entry. Compatible with all door materials, handing methods and fabrication patterns. Available in two projections measured from the jamb surface. See table below for usage of 400 series keepers with 410 series mortise locks.

Adjustability

All 400 series keepers are vertically adjustable to accommodate variations in door and lock placement.

Material

Keeper is extruded architectural aluminum.

Feature Options

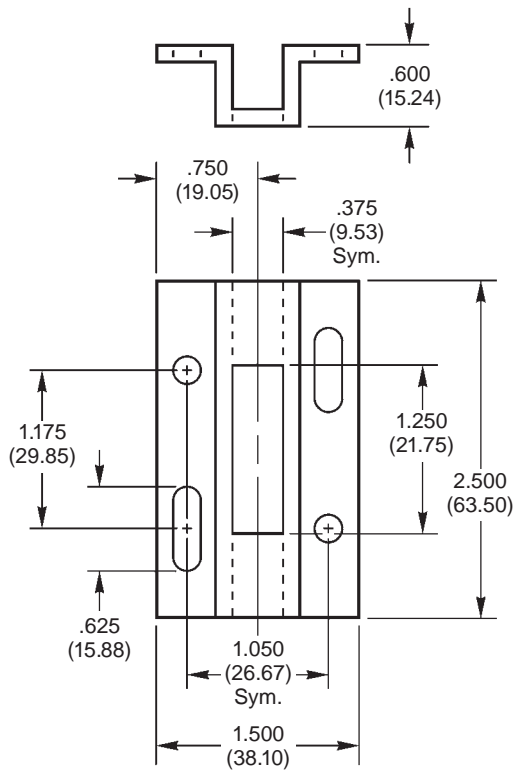
See reverse for part numbers.

KEEPER USAGE

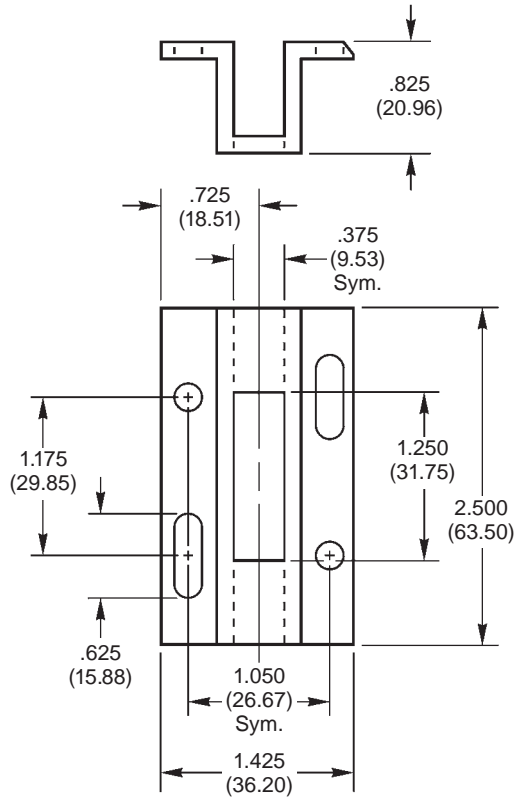
KEEPER \ LOCK	400-26-1	400-27-1	400-36-1	400-39-1	400-60-1	400-63-3	400-64-1
410-3	X	X	X	X	X	X	X
410-4	X	X	X	X	X	X	X
410-15	X	X	X	X	X	X	X
410-18	X	X	X	X	X	X	X
410-24	X	X	X	X	X	X	X
410-25	X	X	X	X	X	X	X
410-26	X	X	X	X	X	X	X
410-28				X			
410-29				X			
410-32				X			
410-34				X			

400 SERIES KEEPER SPECIFICATIONS

Part No.	Finish
400-60-1	#8 white powder paint
400-60-2	#5 black powder paint

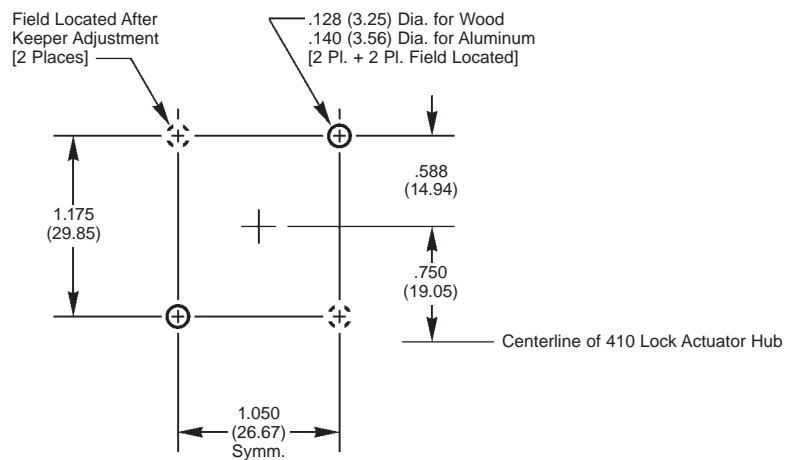


Part No.	Finish
400-63-3	#8 white powder paint
400-63-4	#5 black powder paint



Note: Dimensions in "()" Are in Millimeters.

TYPICAL FABRICATION PATTERNS



Copyright © 1998 Revised 5/98